



LAYCOCK SYSTEMS, INC.

1601 North 43rd Street, Tampa, FL 33605

Ph: 813-248-3555 / Fax: 813-242-0514

Email: sales@laycocksystems.com / Web: www.laycocksystems.com

INSTRUCTIONS FOR BENCH TYPE

COIL WINDING MACHINE

CROWN MODELS 2057 & 2069

The Crown Bench type Coil Winding Machine is a small, rugged and durable unit used for winding coils from the smallest solenoid type to the medium size, single- and 3-phase types stator coils. (3 HP to 75 HP).

MOUNTING:

The machine should be mounted to the front and on the right hand side of a table or work bench. The front of the machine is mounted flush to the front of the table; the right hand side should be within an inch of the table edge. This should be done primarily to give plenty of swing to any desired head that might be used. Option: Attach a chain thru hole provided in the combination brake and clutch lever, "S" hooks supplied. The other end of the chain should be fastened to the hole in the foot pedal. With the clutch-brake lever position at its extreme down position, adjust chain so that the foot pedal will have a minimum of 1" clearance from the floor. (Foot Pedal, Part #2071).

WARNING: This machine is shipped dry. Add 20 oz. of SAE #40 oil through the vent plug at top of machine.

MOUNTING THE COIL WINDER HEAD:

All Crown Winding Heads will match the holes of the face plate. If some other type of winding form is used, it can be mounted with any of the holes on the face plate or in the tapped hole in the center. The Machine is furnished with a 1/2"-13" NC tapped hole.

WARNING: Move the brake-clutch Lever to the neutral or center position and rotate the head by hand before turning on the power. Be sure there is clearance for its complete rotation.

SPEED SETTING:

The three speeds are obtained by placing the V-belt in the various positions on the 3-step pulley. The lowest face-plate speed is obtained by setting the belt in the smallest portion of the motor pulley.

LOW= 108 RPM, MEDIUM= 220 RPM, HIGH= 400 RPM.

OPERATION:

Set the counter to zero by means of the wing nut on the end opposite the counter shaft. Turn the motor on and press the foot pedal slowly until the maximum speed is obtained. Wind the desired number of turns as indicated on the counter and stop the machine by removing your foot from the foot pedal. Removing the foot automatically engages the brake.

MAINTENANCE:

The Crown Bench type Coil Winding Machine has basically only two points of wear:

1. The drive belt (Part #807031)
2. The brake Linings (Part #500003)

The oil level should be checked occasionally, and maintained so that the lowest ear should dip into the oil from 1/8" to 1/2". Disconnect power. Remove vent plug on top of gear case. Insert a twelve inch stick or rod straight down to bottom of gear case. Remove and observe oil level. Oil should be indicated for 3/4" minimum depth. (Use SAE #40 wt oil as needed).

WARRANTY

Crown's Motor Repair Equipment is warranted to the original owner against defects in materials and workmanship for ninety (90) days from date of purchase. Any part found to be defective (except by overloading, misuse, neglect, fire, accident, tampering with by unauthorized serviceman, or other cause beyond the manufacturer's control), will be replaced or repaired free of charge.

SPECIFICATIONS FOR BENCH TYPE COIL WINDING MACHINE CROWN MODELS 2057 and 2069

Primary power: Model #2057: 115VAC, 50/60Hz, 1 phase.
Model #2069: 230VAC, 50/60Hz, 1 phase.

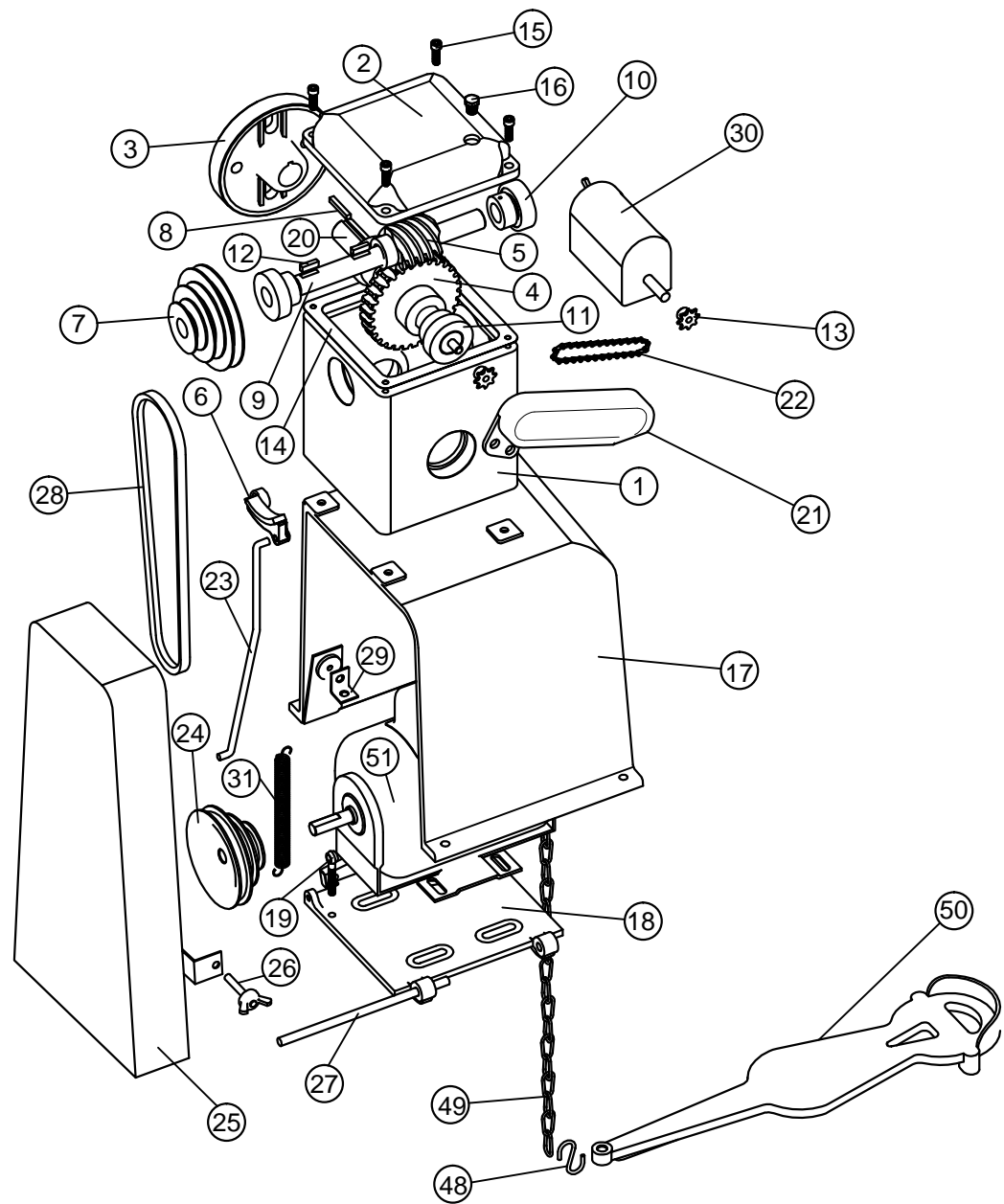
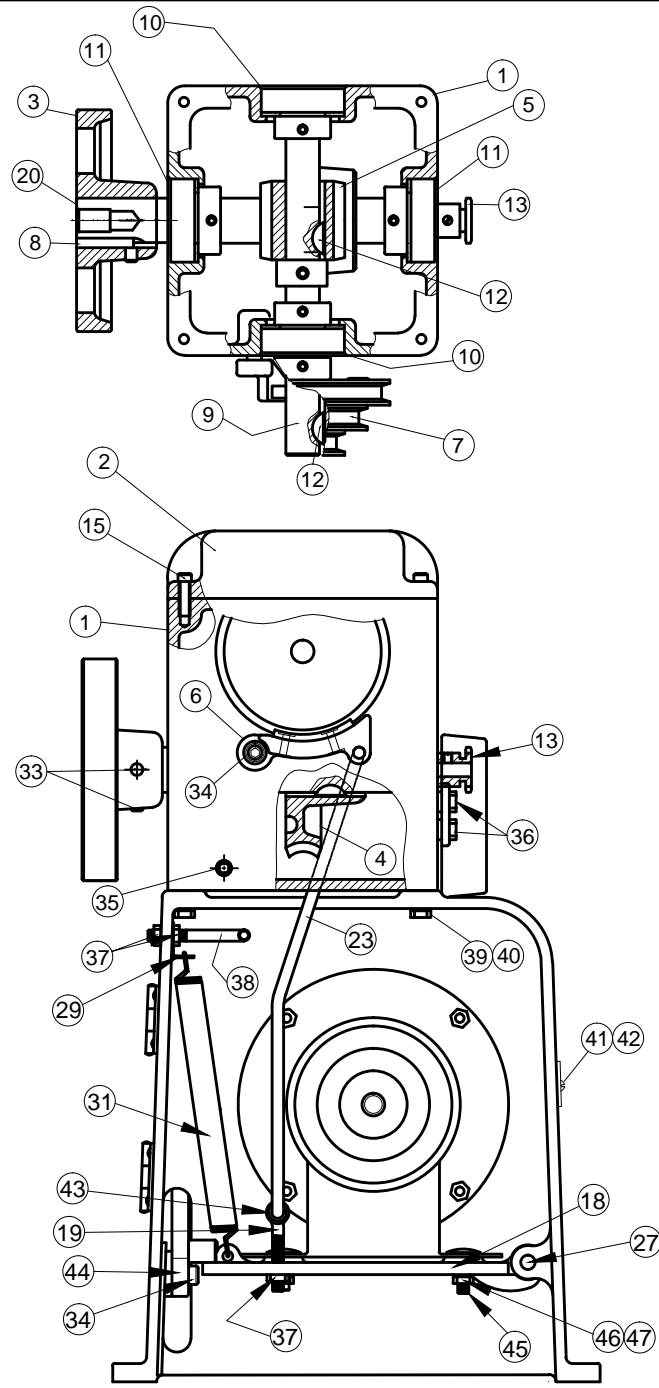
Construction (Packaging): Cast aluminum base and gear housing with steel worm gear drive.
(Torque at Low speed= 28 ft-lb, at Medium speed= 15 ft-lb, and at High speed= 7 ft-lb).

Controls: Clutch & Brake: Depressing the foot pedal engages the machine, releasing the foot pedal engages the brake. Mechanical five (5) digit, heavy duty counter. Speed adjustment: simple belt adjustment on three (3) step pulley varies the speed to Low (108 RPM), Medium (220 RPM), and High (440 RPM). Face-plate Shaft is tapped for standard 1/2"-13 NC bolt for winding solenoid, electromagnetic and other small coils.

Attachments: Optional Foot Pedal with chain supplied (Crown Part #2071).

Spare Parts: To be recommended upon request. Contact Factory.

Bench Winder Model : 2057 & 2069



REPAIR PARTS LIST

Find No.	Part Number	Part Name	NO REQ
1	807001	GEAR HOUSING	1
2	807002	COVER, GEAR HSG	1
3	807004	FACE PLATE	1
4	807016	GEAR, WORM	1
5	807017	WORM	1
6	500003	ASSEMBLY, BRAKE	1
7	807013	PULLEY "V"	1
8	807228	KEY, SQUARE (3/16 X 3/16 X 1 1/4)	1
9	807008	SHAFT, WORM (INPUT)	1
10	807038	BEARING BALL,(FAFNIR RA012NPP)	2
11	807039	BEARING BALL,(FAFNIR RA100NPP)	2
12	807027	3/16 x3/16 x 3/4 KEY	3
13	807037	SPROCKET, LEADDER CHAIN #1	2
14	807032	GASKET, COVER	1
15	807024	SCREW SOC. HD. CAP. (1/4-20NC X 3/4)	4
16	807042	VENTED PLUG, PIPE	1
17	807000	BASE, COIL WINDER	1
18	807007	BASE, MOTOR	1
19	807033	BOLT, EYE	1
20	807009	SHAFT, OUTPUT	1
21	807006	GUARD, CHAIN	1
22	807019	CHAIN, LEADDER	1
23	500005	ROD, BRAKE	1
24	807003	PULLEY "V"	1
25	806007	GUARD BELT	1
26	807290	THUMB SCREW	1
27	807015	PIVOT ROD BASE, MOTOR	1
28	807031	"V" BELT	1
29	807018	BRACKET, SPRING	1
30	806006	COUNTER	1
31	807034	SPRING	1
33	807041	SET SCREW, SOC CUP PT. (5/16-18 X 5/16)	2
34	807046	SCREW SHOULDER	2
35	807024	PLUG, PIPE (1/8-27NPT)	1
36	807029	SCREW, HEX.L HD. CAP. (1/4-20NC X 1/2)	2
37	807040	NUT, HEX. (1/4-20NC) (STD.)	3
38	807023	GUIDE, BELT	1
39	807041	SCREW, HEX.L HD. CAP. (1/4-20NC X 3/4)	4
40		WASHER, LOCK (1/4)	4
41		SCREW. (10-32NC)	1
42		WASHER, LOCK (10-32)	1
43	807047	PIN, COTTER (1/16 X 1/2)	1
44	500001	ASSEMBLY, LEVER	1
45	807044	BOLT CARRIAGE (5/16-18NC X 1)	4
46	807025	NUT, HEX. (5/16-18NC) (STD.)	4
47	808030	WASHER, LOCK 5/16	4
48		"S" HOOK (OPTIONAL ATTACHMENT)	2
49	2071	CHAIN (OPTIONAL ATTACHMENT)	1
50		FOOT PEDAL (OPTIONAL ATTACHMENT)	1
51	805005	MOTOR 115V 1/3HP	1
51	805006	MOTOR 230V 1/3HP	1